

LifePin - Liferay Pinboard System



Juri Strumpflohn

June 25, 2009

Contents

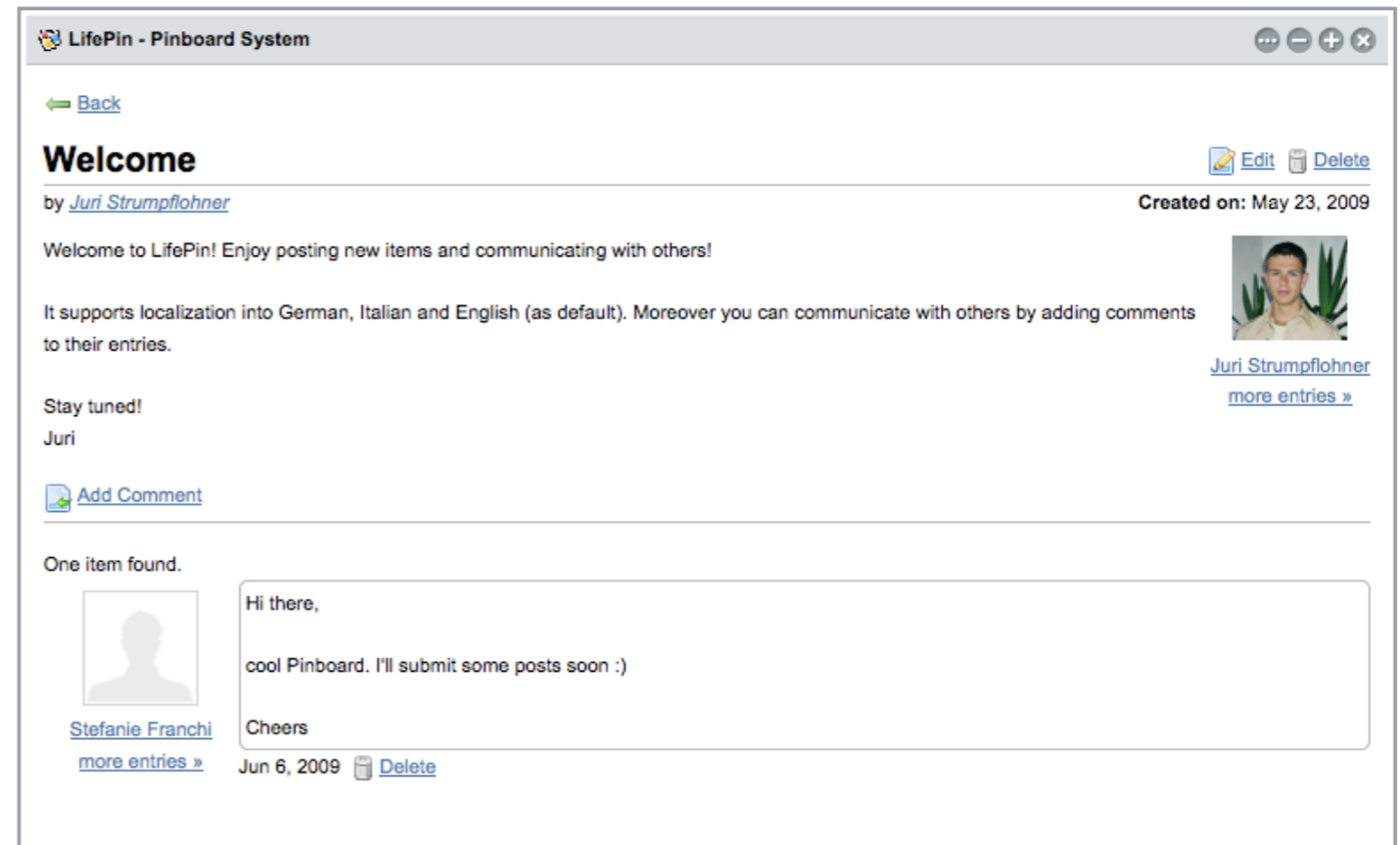


1. Introduction to the project
2. LifePin users and features
3. Architecture
4. Technical Problems
5. Future Work
6. Demo

1. Introduction to the Project

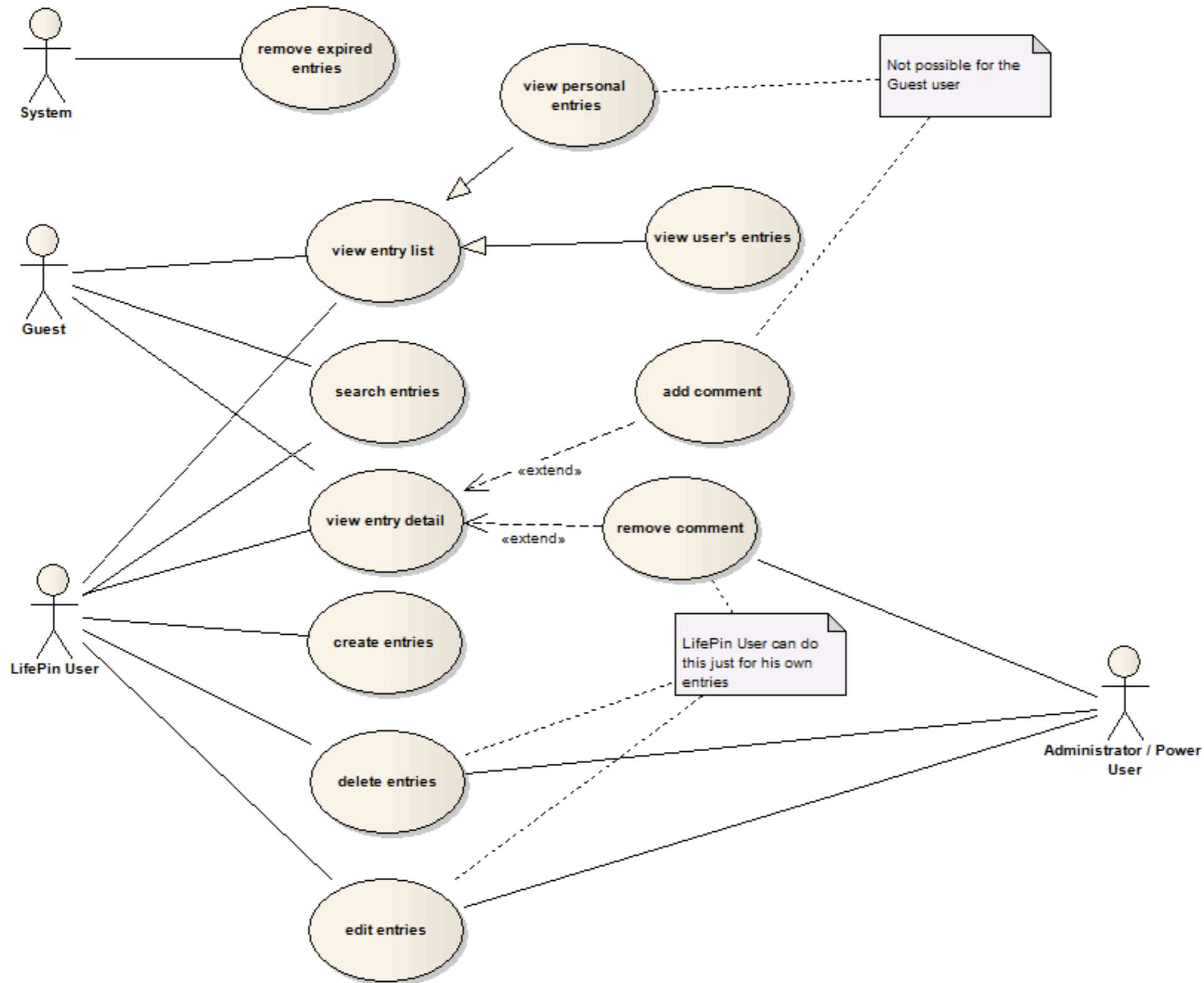


- Sharing information
- Facilitate communication
- Clean and simple UI
- “Ease of use”



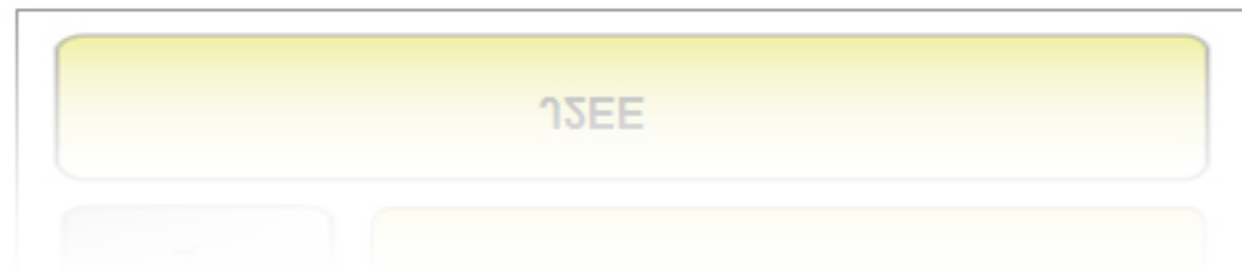
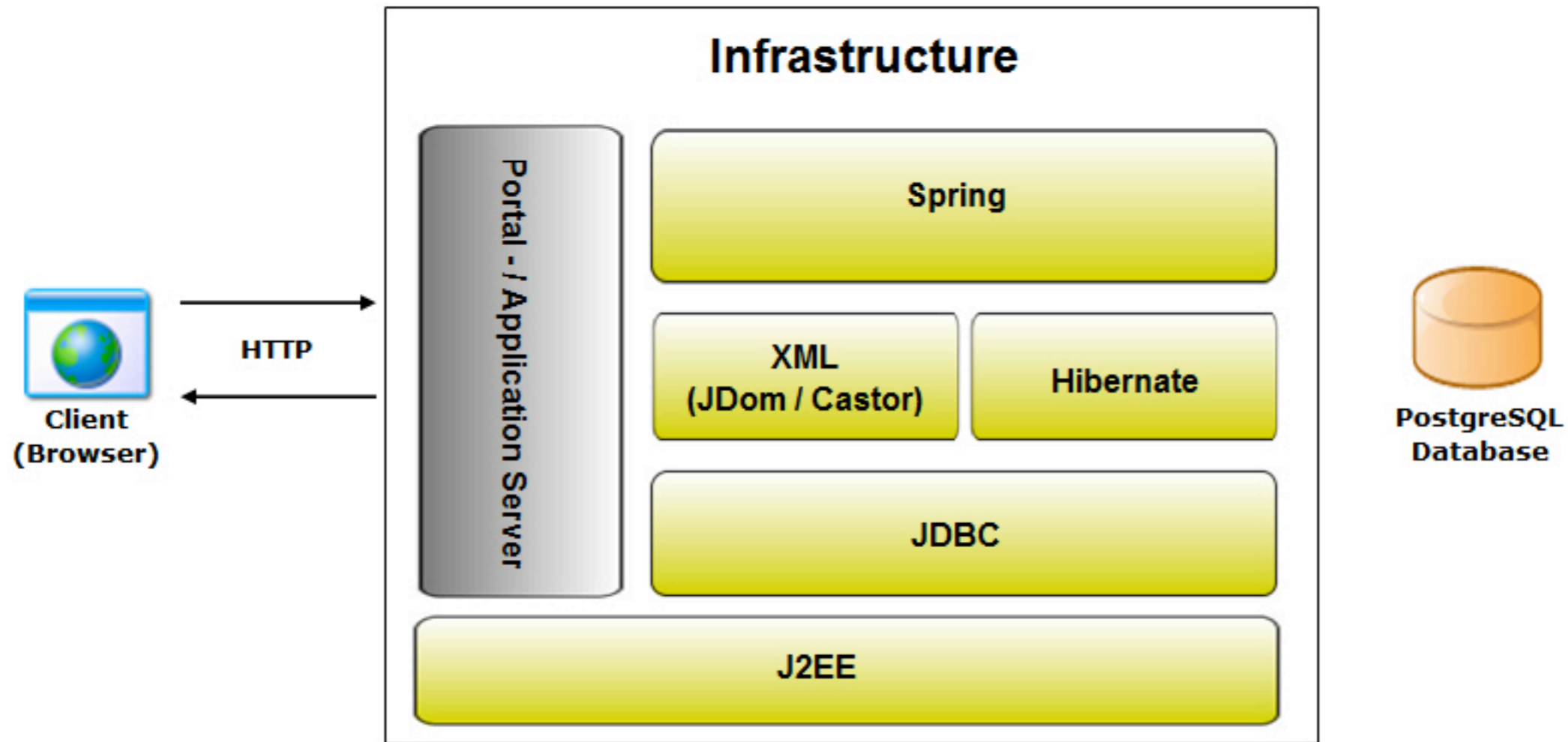
June 25, 2009

2. LifePin users and features



3. Architecture

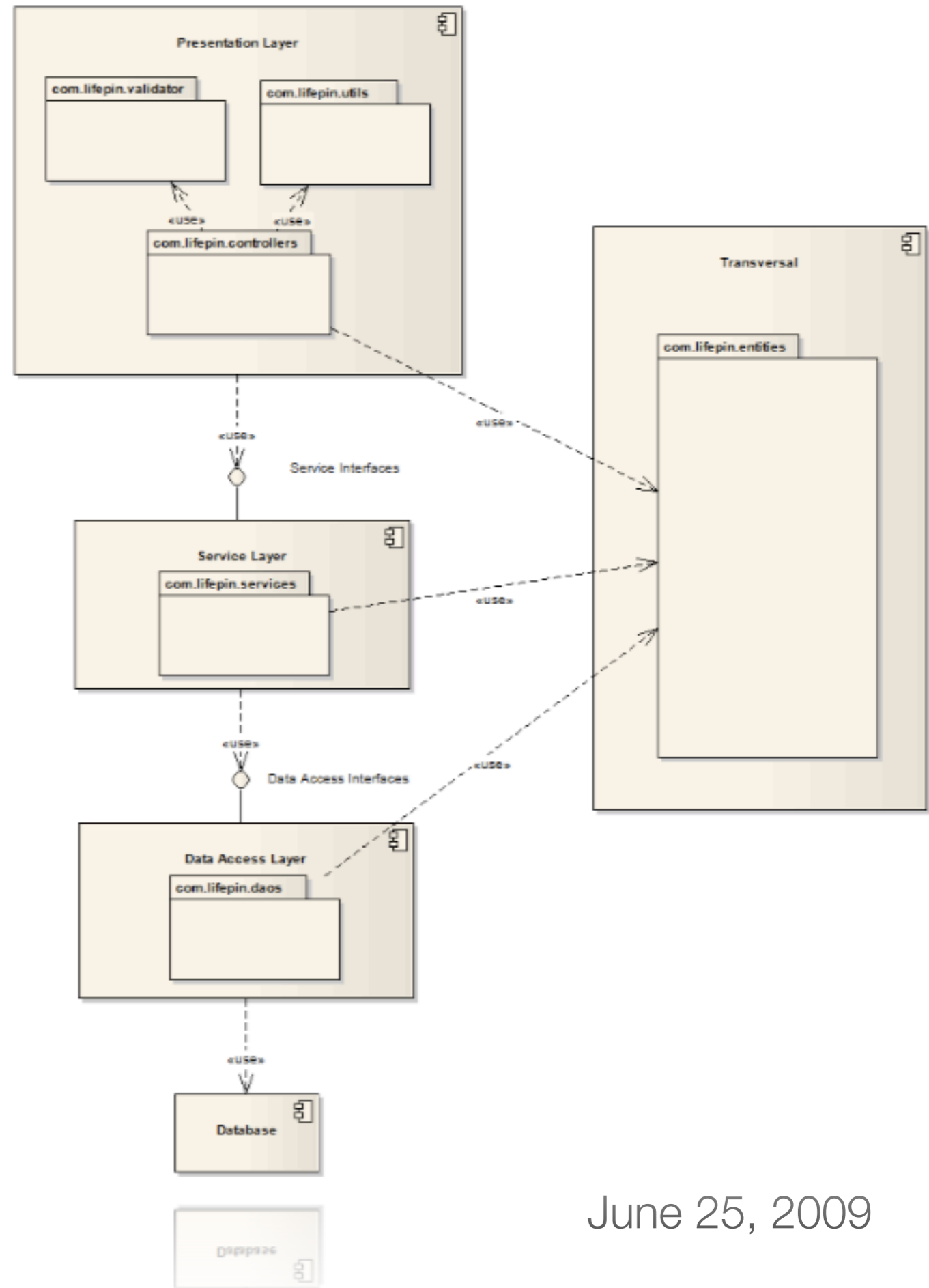
Infrastructure - Diagram



3. Architecture

Layering - Diagram

- Presentation Layer
 - Controllers, Validators, Utility classes, JSPs
- Service Layer
 - Services exposing the applications business logic
- Data Access Layer
 - Persistency related logic
- Transversal (Layer)
 - Entities (POJOs) that are shared among all the layers

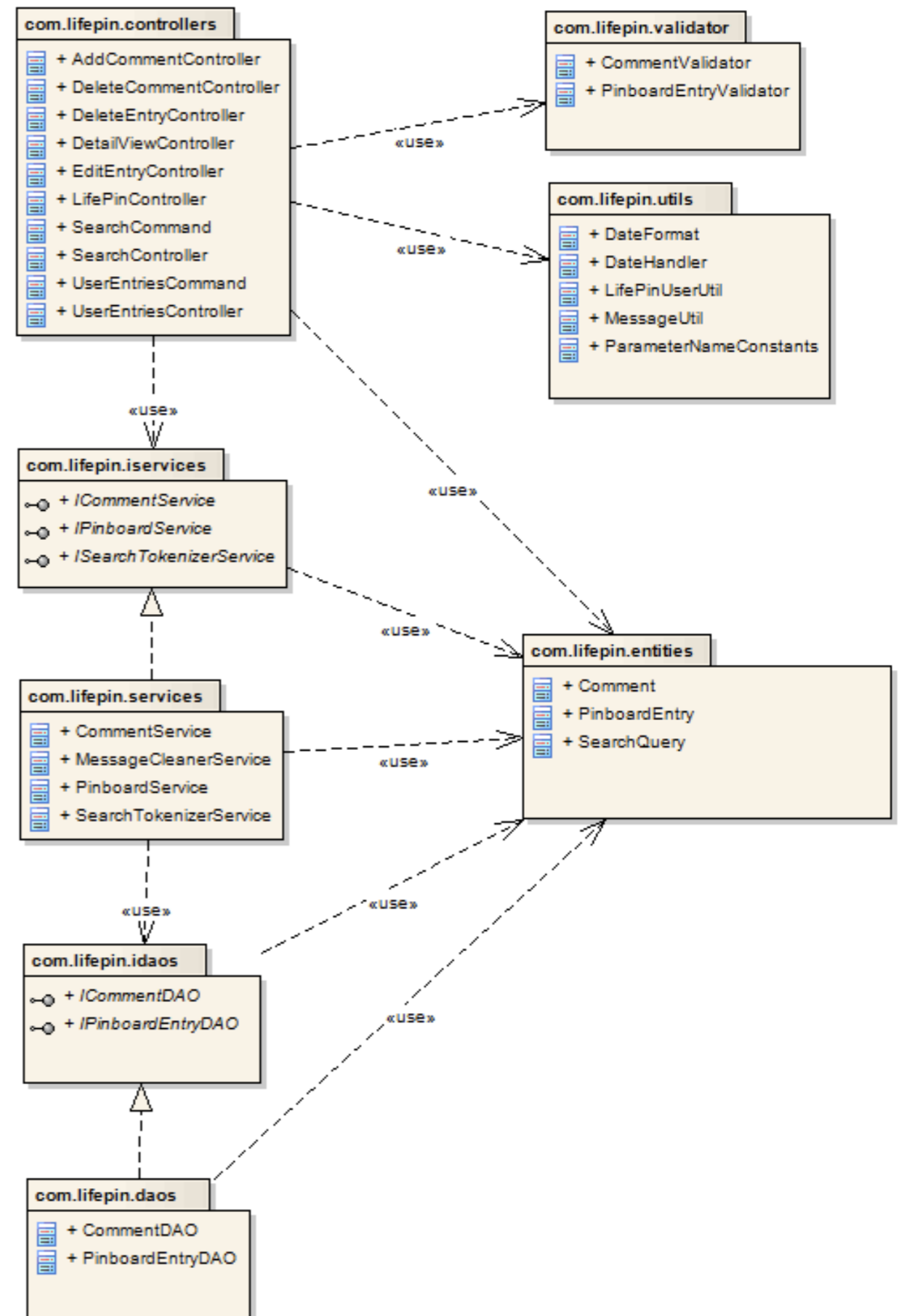


June 25, 2009

3. Architecture

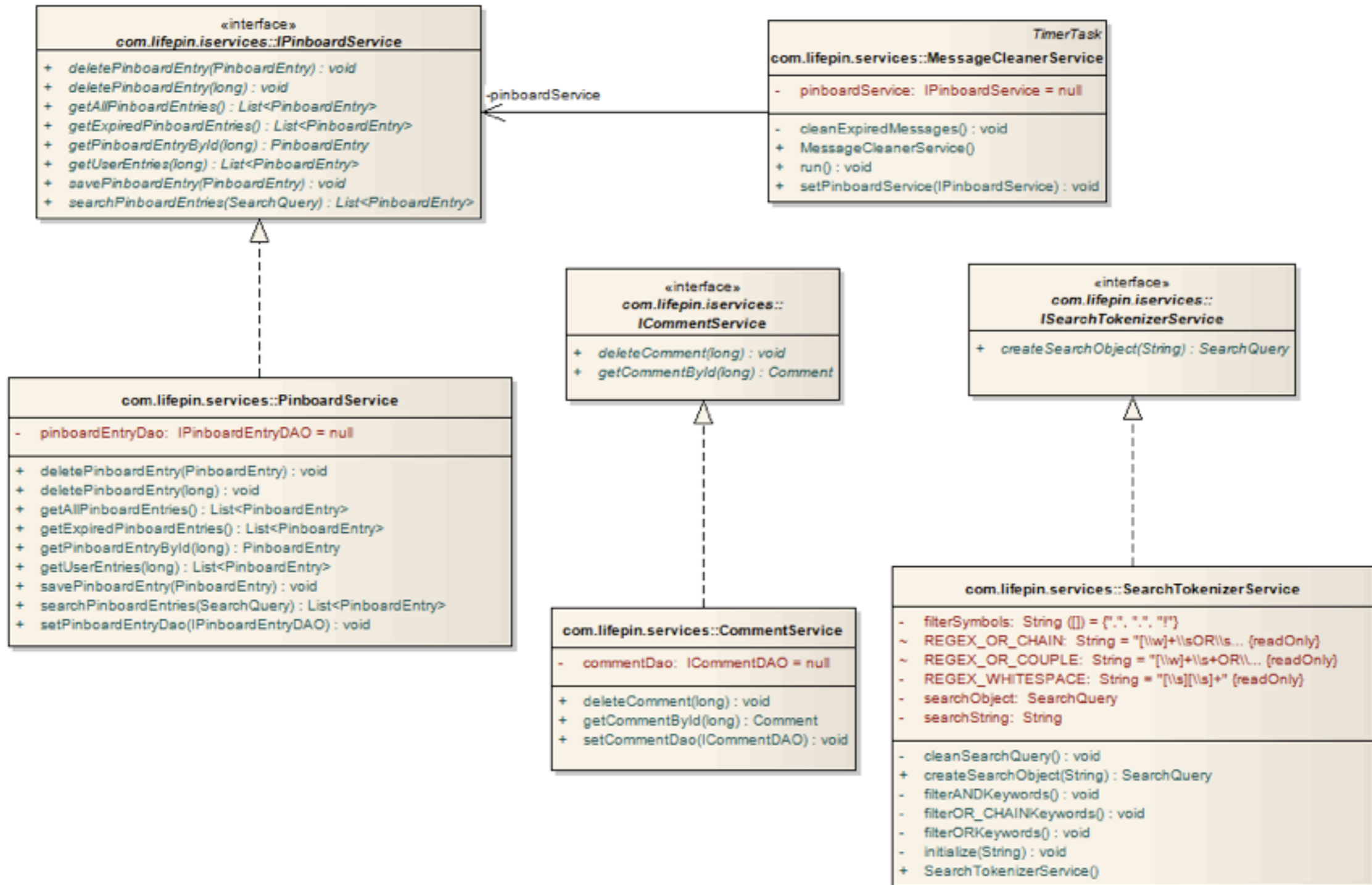
Layering - Diagram

- Presentation Layer
 - Controllers, Validators, Utility classes, JSPs
- Service Layer
 - Services exposing the applications business logic
- Data Access Layer
 - Persistency related logic
- Transversal (Layer)
 - Entities (POJOs) that are shared among all the layers

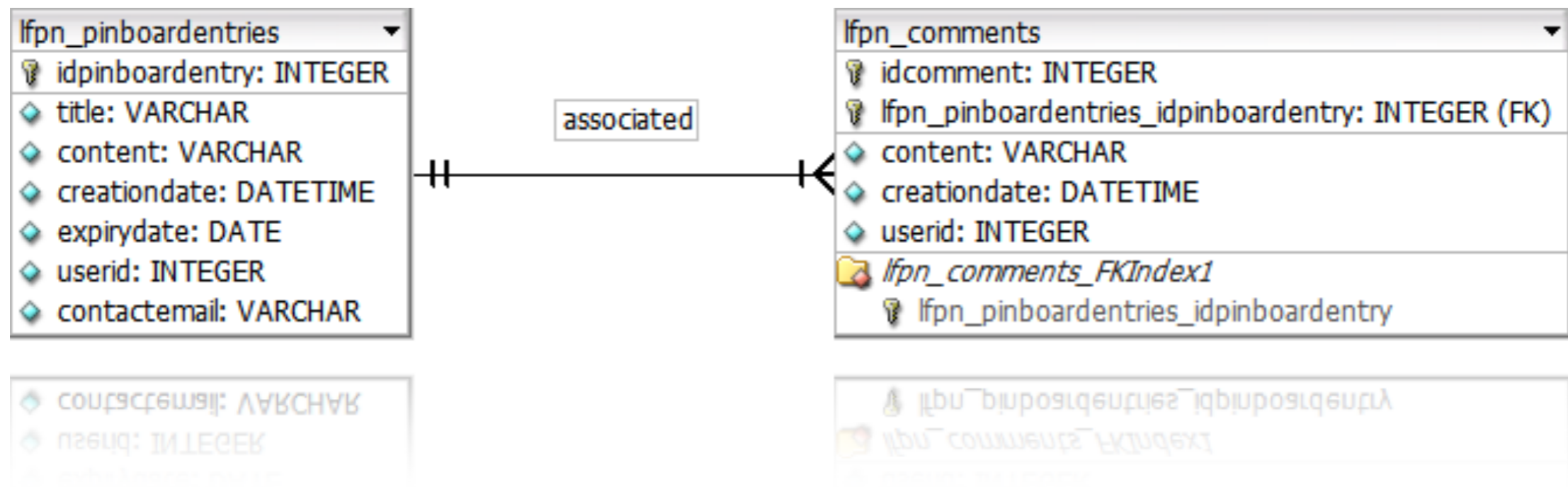


3. Architecture

Service Layer



Database Schema



Technical Problems



- `<liferay-ui:icon>` tag
 - poor documentation
 - localization issues

```
<liferay-ui:icon image="add" url="{addUrl}"  
message="add-entry" label="true" />
```



Future Work



- enhanced searching with Lucene
- adding tags to user posts
- E-Mail notifications
- rating of posts



June 25, 2009

Demo

LifePin

<http://unibz.ectrldev.com/web/juri/home>

June 25, 2009